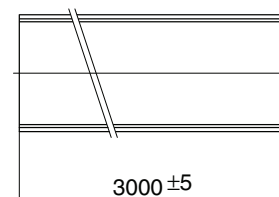


Channel "OMEGA" in Fibreglass Series CV/05-10

CHANNEL "OMEGA" in FIBREGLASS for CABLE PROTECTION

Article code: **See Table**

Series	Code	Dimensions (mm)					
		Length	a	b	h	R	S min.
CV0/5	T0P00001	3000	56	42	56	26	3
CV0/10	T0P000080	3000	100	88	100	50	3,5



Technical characteristics:

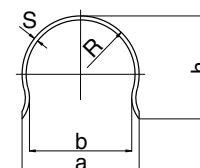
- Polyester resin reinforced with glass fibre Grey Ral 7001.
- Fire resistance, according to Indications ASTM D-635: < 240 seconds.
- Impact resistance IK 10 according to CEI EN 62262.
- Reference to Enel Technical Specification: Tab. DS 4237 National.

Caratteristiche del manufatto:

- The cable is manufactured via fibreglass poltrusion.
- Due to the material employed, the production technique and its Omega shape; the channel is characterised by high resistance to pressure and corrosion, and high electrical isolation.
- The channel is generally used to protect Low and Medium voltage cables. It is mounted by means of metal brackets. Upon request it may be supplied with slots for installation with a stainless-steel strip.

Accessories for wall mounting:

- T6P00001 - Omega brackets 50.
- T6P00003 - Omega brackets 100.



CV0/5



CV0/10

